

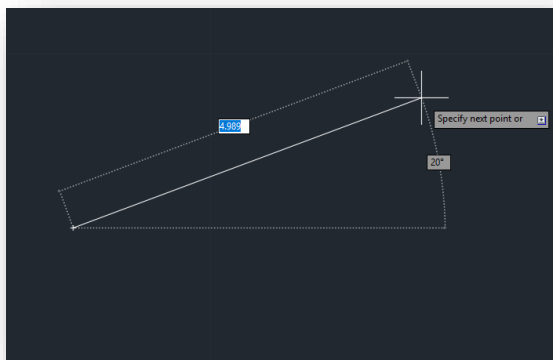
VISUALIZE AND CONFIGURE THE PARAMETERS OF DIMENSIONS IN THE EDITING IN AUTOCAD

INTRODUCTION

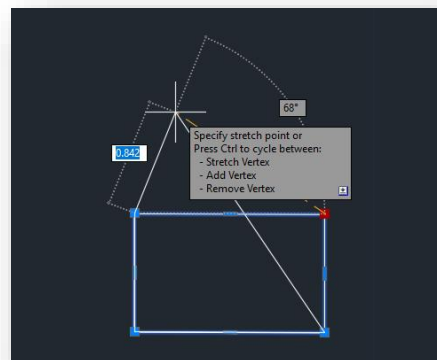
In this tutorial we will learn how to activate and configure dimension dynamic entries.

Dimension dynamic entries are very useful aids, provide dynamic information at the time of editing, display dynamically updated information near the pointer and allow you to enter the exact size in the text box that is enabled in blue. The options and values are also specified in the text box in tools information.

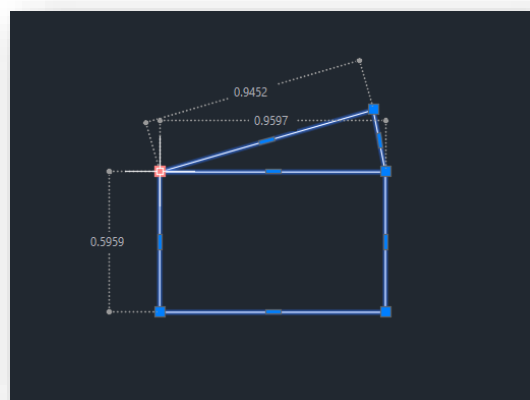
In the creation



In the grips



Another very useful thing is that you can check the dimension of a line or the dimension of two joined lines by selecting 1 end point, or the point of union in the case of more than one line.





ACTIVATION OF THE DYNAMIC INPUTS

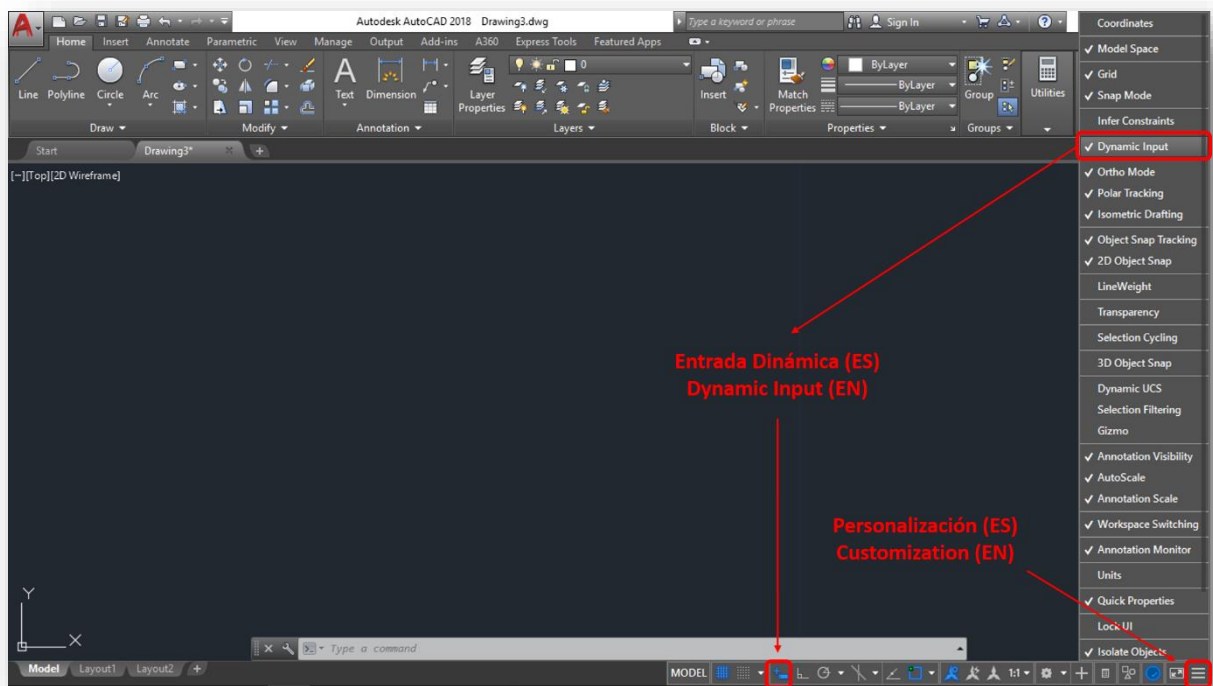
If we don't have activated the dynamic input we can activate them:

With the keyboard: With the key **F12**

Status bar: Activating the button



if we do not see the button we can see it activating dynamic input in the customization menu that is at the end of the status bar represented by 3 horizontal lines



If it still doesn't appear it may be that the dynamic inputs are disabled. From the system, the variable that controls it is DYNMODE.

DYNMODE (VARIABLE)

Turns Dynamic Input features on and off.

- 0 All Dynamic Input features, including dynamic prompts, off.
- 1 Pointer input on.
- 2 Dimensional input on.
- 3 Both pointer input and dimensional input on.

If it is set to a negative value, the Dynamic Input features are not turned on.

The default configuration is 3, this way we can activate all.



CONFIGURATION OF THE DIMENSION DYNAMIC INPUTS

Once activated the dynamic entries we can configure the dimension parameters with the DSETTINGS command

DSETTINGS (EN)(COMMAND) - PARAMSDIB(ESP)

The Drafting Settings dialog box is displayed.

- Show Only 1 Dimension Input Field at a Time

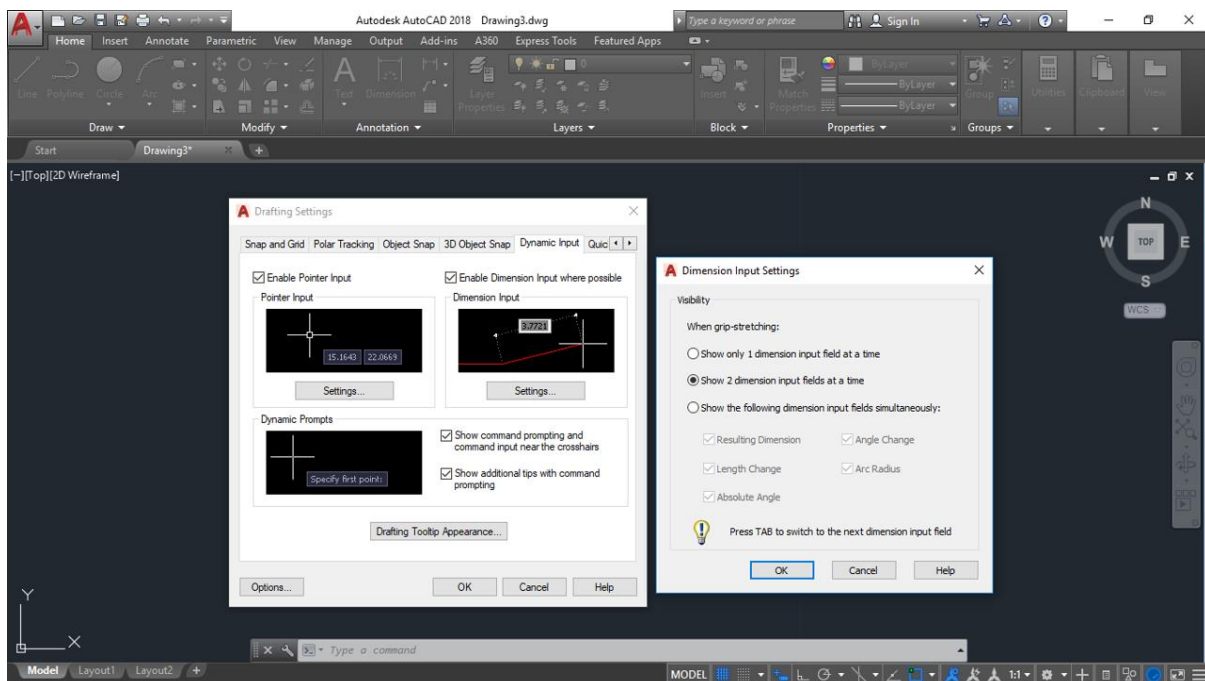
Displays only the length change dimensional input tooltip when you are using grip editing to stretch an object.

- Show 2 Dimension Input Fields at a Time

Displays the length change and resulting dimensional input tooltips when you are using grip editing to stretch an object.

- Show the Following Dimension Input Fields Simultaneously.

When you are using grip editing to stretch an object, displays the dimensional input tooltips that are selected below.



And in this way, we will have configured the parameters to be able to make use of the dynamic help.